



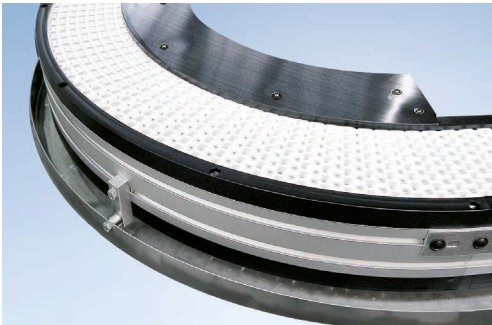
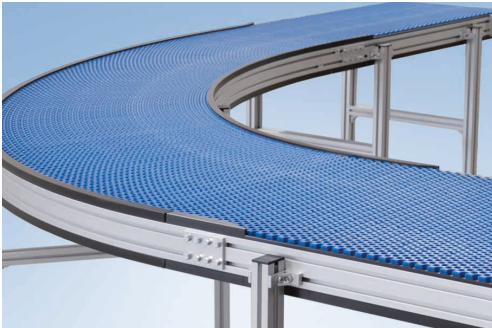
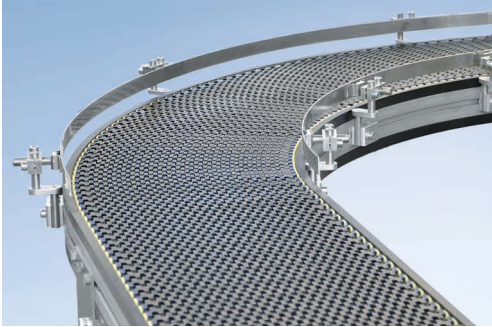
Modular Belt Conveyor KMF-P 2040



Efficiently handle any track layouts



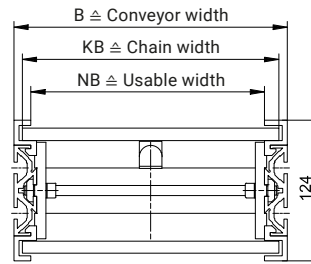
Curved Modular Belt Conveyor KMF-P 2040



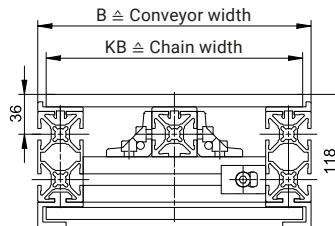
Benefits of the KMF-P 2040

- High load capacities available
- Positive drive mechanism eliminates slippage and makes it suitable for wet applications
- Maximum usable width with low total width
- Lateral movement of conveyed products
- Chain material is highly resistant to wear and abrasion, making it suitable for high temperatures, contact with chemicals or food, etc.
- Variable track layouts with just a single drive, different speeds at no additional cost

Cross Sections



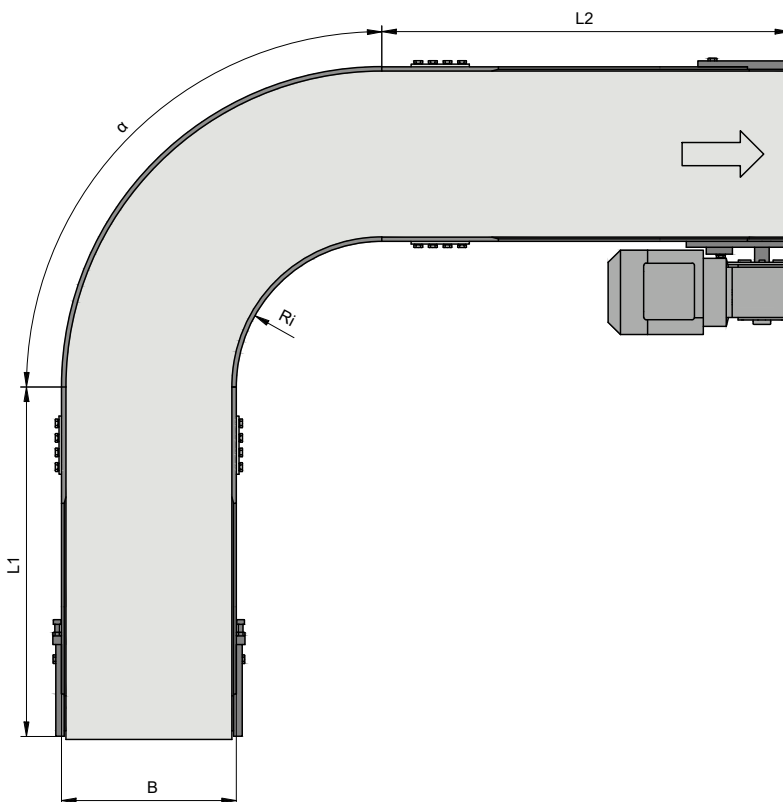
Conveyor frame curve



Conveyor frame straight

Properties

The curved modular belt conveyor KMF-P 2040 has a modular design and, with just one drive for complex track layouts, is extremely efficient. At lengths of up to three metres, the chain does not sag but the belt still runs quietly. With lengths of around three metres or more, there is chain sagging on the drive end, which is enclosed by a protective box. This results in an additional obstructing edge.

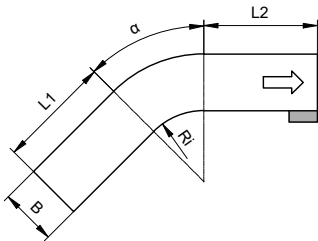


Technical data

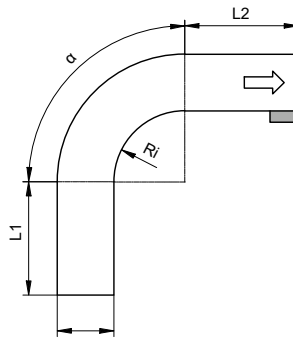
Curve angle α	45° and 90° (in combination, also 135° and 180°)
Drive	head drives AC, AF and AS
Speed	5 to 30 m/min
Load capacity	depending on the track layout, conveyor length and conveyor width, up to 150 kg. Higher on request.
Cleats and side plates	the chain can be fitted with optional transverse cleats and side plates with H = 25 mm.

KMF-P 2040 Variants

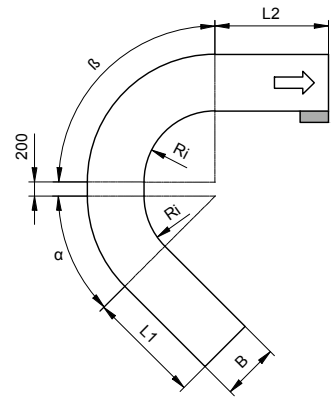
Curve L45°



Curve L90°

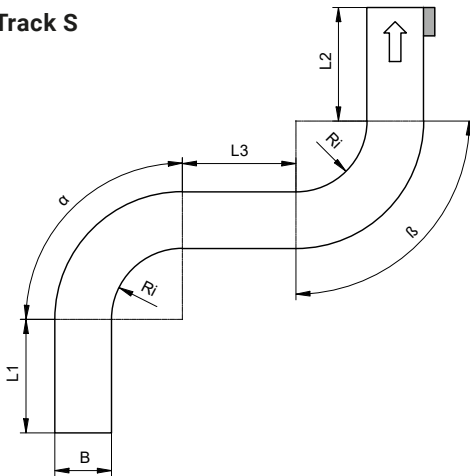


Curve L135°
(also available as L180°)

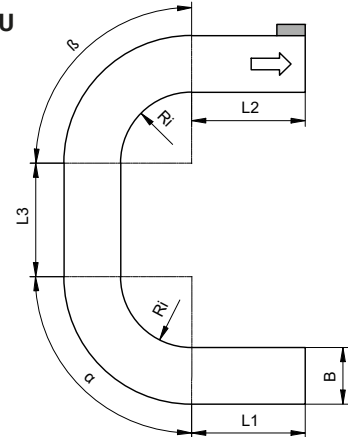


Examples of a Track Layout

Track S



Track U



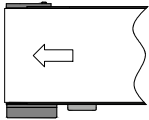
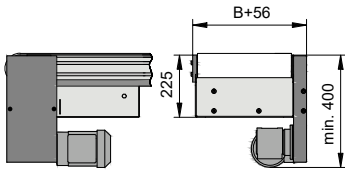
Dimensions [mm]

									only for L45° or L90°				
Conveyor width (B)	164	241	317	394	470	546	623	699	776	852	928	1005	
Chain width (KB)	149	226	302	379	455	531	608	684	761	837	913	990	
Usable width (NB)	134	211	287	364	435	511	588	664	741	817	893	970	
Length L1 (min.)	224	339	453	569	683	797	912	1026	1142	1256	1370	1485	
Length L2 (min.)	645	645	645	758	910	1062	1216	1368	1522	1674	1826	1980	
Length L3 (min.)	Track S	400	452	604	758	910	1062	1216	1368	1522	1674	1826	1980
	Track U	400	400	400	400	400	400	400	400	400	400	400	400
Inner radius (Ri)	324	493	660	830	997	1164	1334	1501	1670	1837	2005	2174	

KMF-P 2040 Drive Versions

Head drive AC

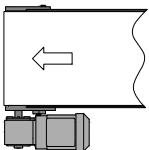
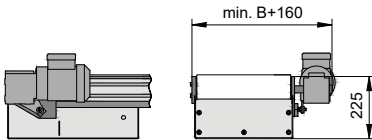
Type L: B20.40.826 | Type S: B20.40.827 | Type U: B20.40.828



Properties	Standard head drive. Drive version with a variety of combination options for motors, gearboxes and sprocket wheels.
Drive location	discharge end left/right
Motor orientation	0°, 90°, 180°
Speed	5 to 30 m/min

Head drive AF

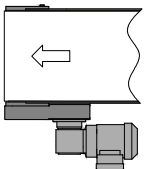
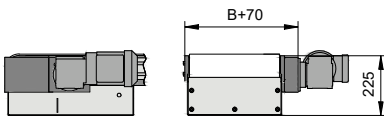
Type L: B20.40.823 | Type S: B20.40.824 | Type U: B20.40.825



Properties	Direct head drive. Compact and low-maintenance drive version with a motor that is fitted directly on the drive shaft
Drive location	discharge end left/right
Motor orientation	0°, 90° (front terminal box), 180°, 270°
Speed	5; 7; 10; 12.5; 17; 20.5; 26; 29.5 m/min

Head drive AS

Type L: B20.40.820 | Type S: B20.40.821 | Type U: B20.40.822



Properties	Compact head drive, positioned laterally on the outside. A drive version restricted to a minimum total height with motor mounted on the outside
Drive location	discharge end left/right
Motor orientation	0°, 90°, 180°, 270°
Speed	5 to 30 m/min



Maschinenbau Kitz GmbH
Headquarters of the
mk Technology Group

Ampèrestrasse 18
53844 Troisdorf
Germany

Tel. +49 228 4598-0
info@mk-group.com

